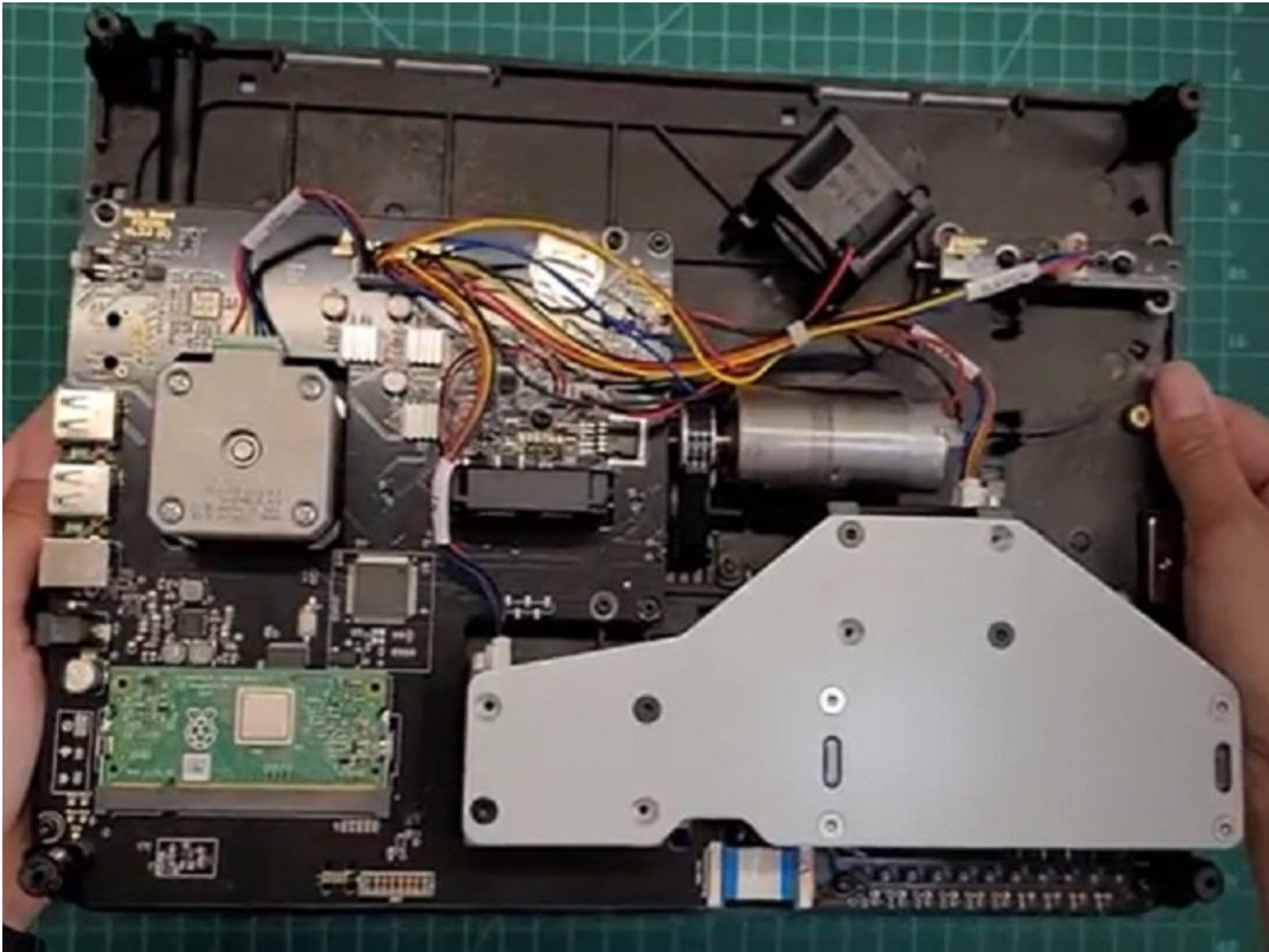




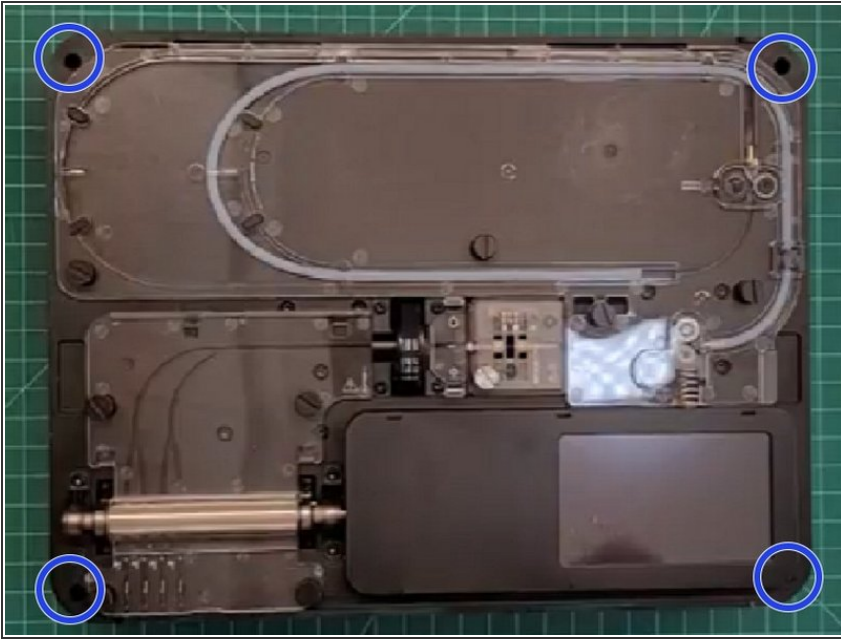
Removing the Bottom Casing

How to remove Palette 3's bottom casing.

Written By: Jonny Yeu

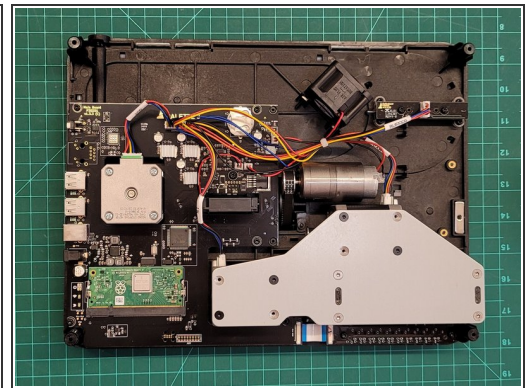


Step 1 — Removing the top portion



- Remove Palette's top lid.
- Using the provided Torx screwdriver, remove the 4 screws on each corner of the substructure.

Step 2 — Isolating the substructure



- Remove the IO plate cover from the unit, by pulling the tab on the Ethernet port. The IO plate cover is snap-fit to the unit and can be placed back easily.
- Gently lift and remove the substructure from the bottom casing.
- You'll now be able to replace the main board, fans, and other components.