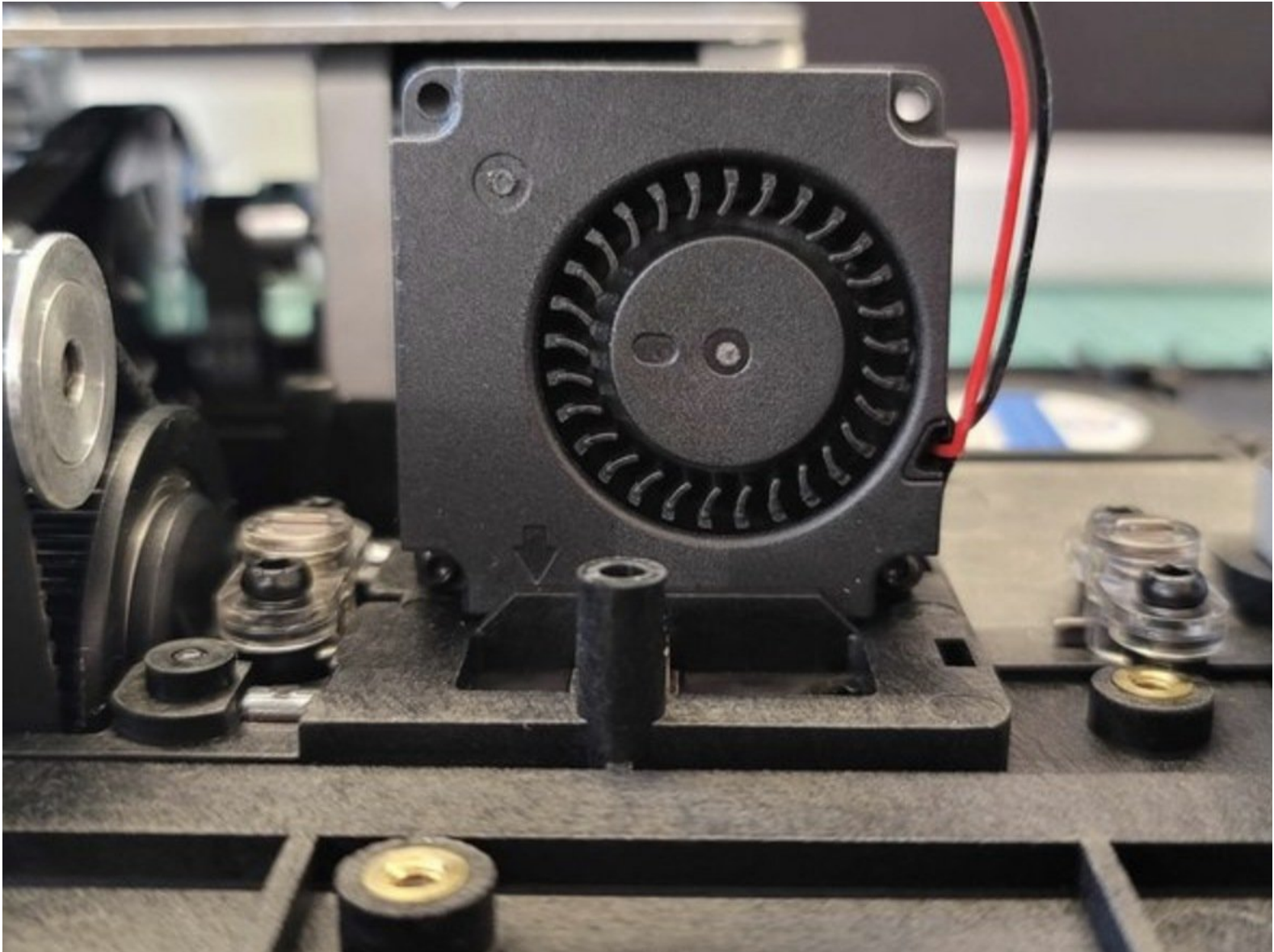




Replacing the Fans

Written By: Mosaic Support

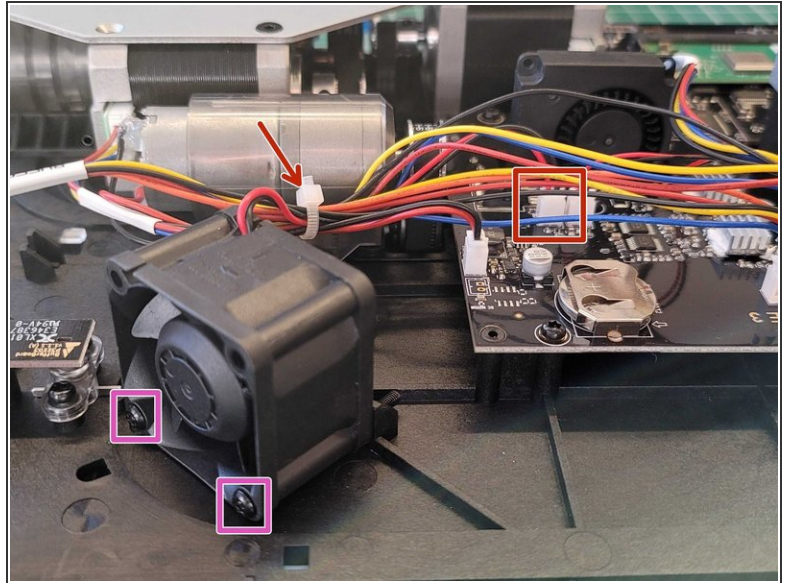
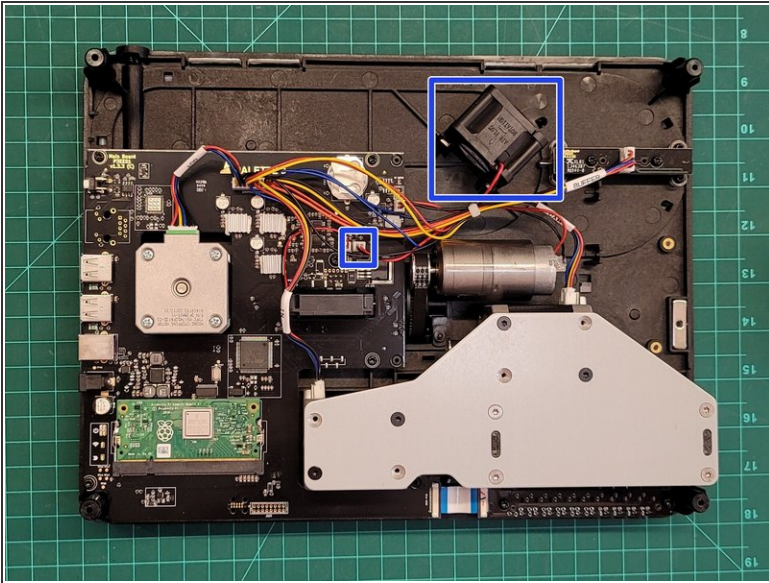


INTRODUCTION

In this guide you will learn how to:

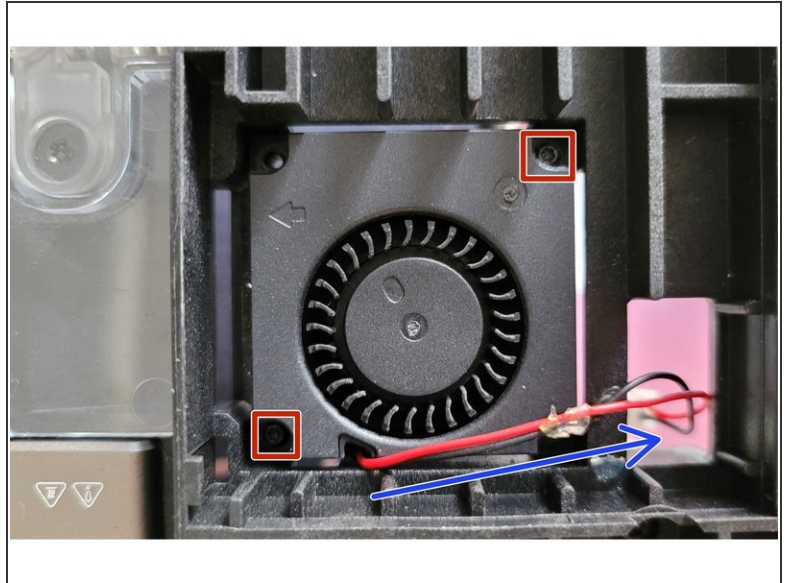
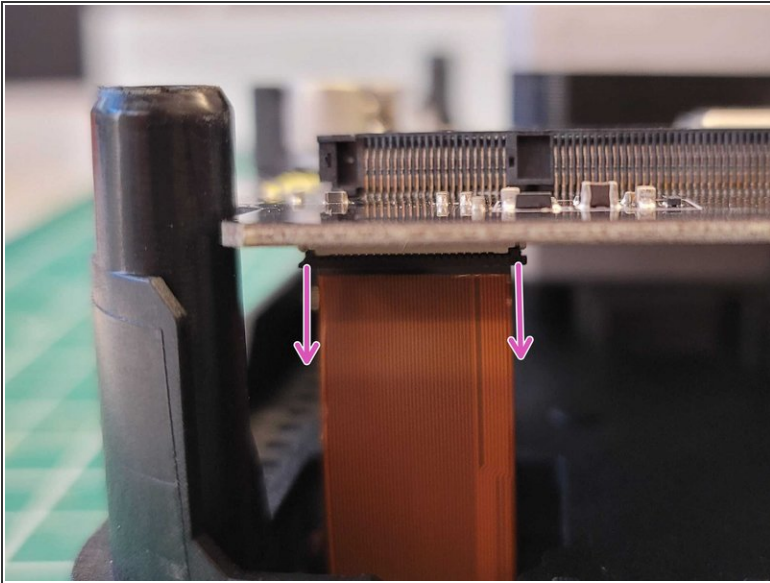
- Replace the substructure, splice core, and screen fan on Palette 3.

Step 1 — Replacing the Unit and Substructure fan



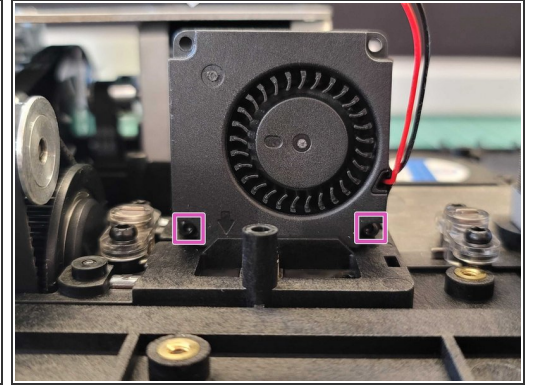
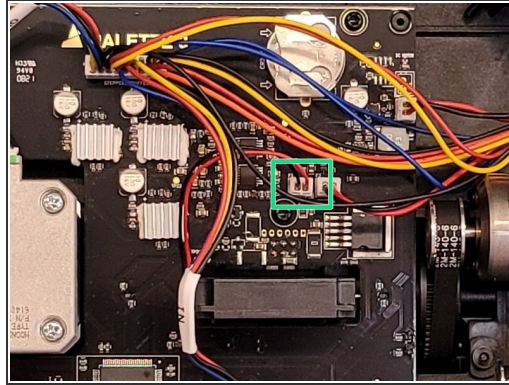
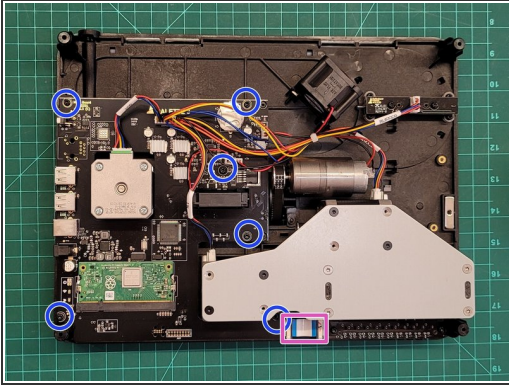
- [Remove the bottom casing following these steps.](#)
- Remove the two bottom screws using the hex screwdriver provided.
- Cut zip-tie to release wire connections. Unplug the fan connection from F2 on the main board.

Step 2 — Replacing the Screen Fan



- Access the [back of the unit](#) by following these steps. Release the screen cable from the main board. The screws holding down the main board can be undone in order to access this screen cable better.
- Flip the unit back to the front. Remove the screen cover, and remove the screen gently by lifting it away from the substructure.
- Remove the 2x screws from the fan using a T6 screwdriver.
- Ensure cable goes into hole in substructure next to fan's spot

Step 3 — Replacing the Splice Core Fan



- [Remove the main board following the steps here.](#)
- Unplug splice core fan from main board
- Use T6 screwdriver to remove bottom 2 screws

If you have any additional questions, please send us a message at support@mosaicmfg.com.