



# Multi-Spool Mode for Palette 3

Automatically use an another input when a spool of filament runs out, and splice spools of filament together to create large, multi-spool prints.

Written By: Mosaic Support



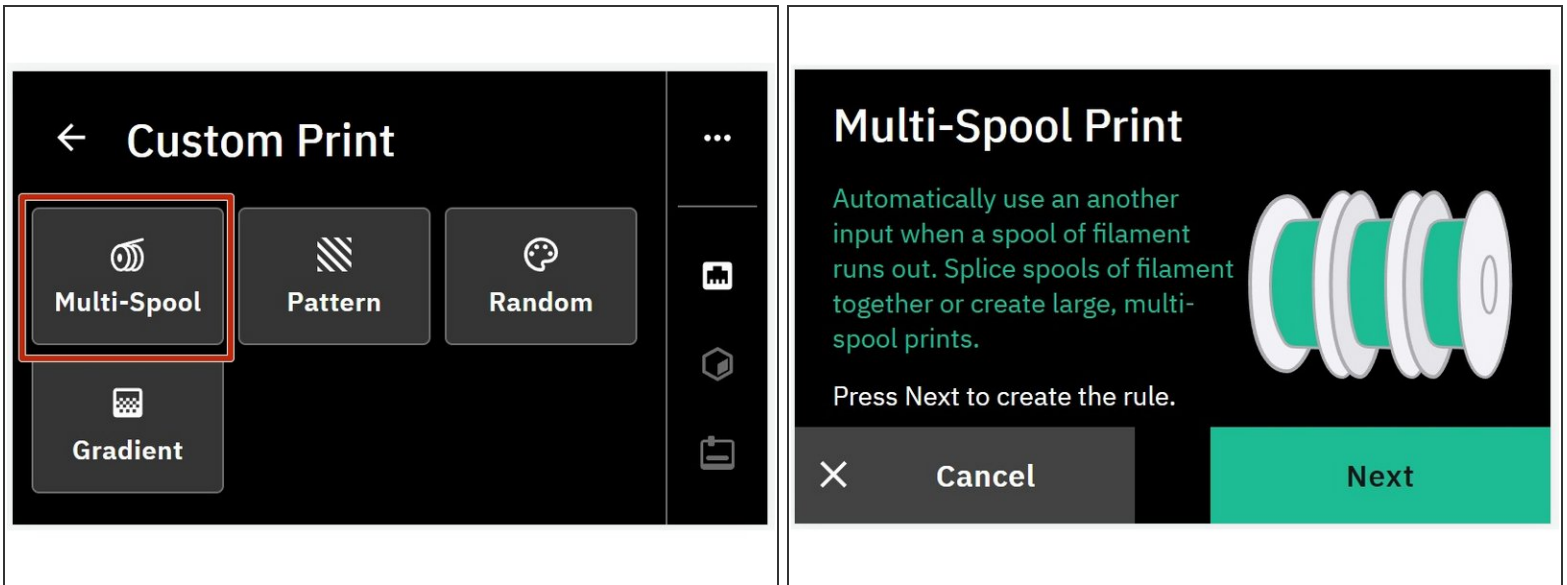
## INTRODUCTION

In this guide, you will learn:

- What multi-spool mode is used for
- How to load multiple drives for this mode

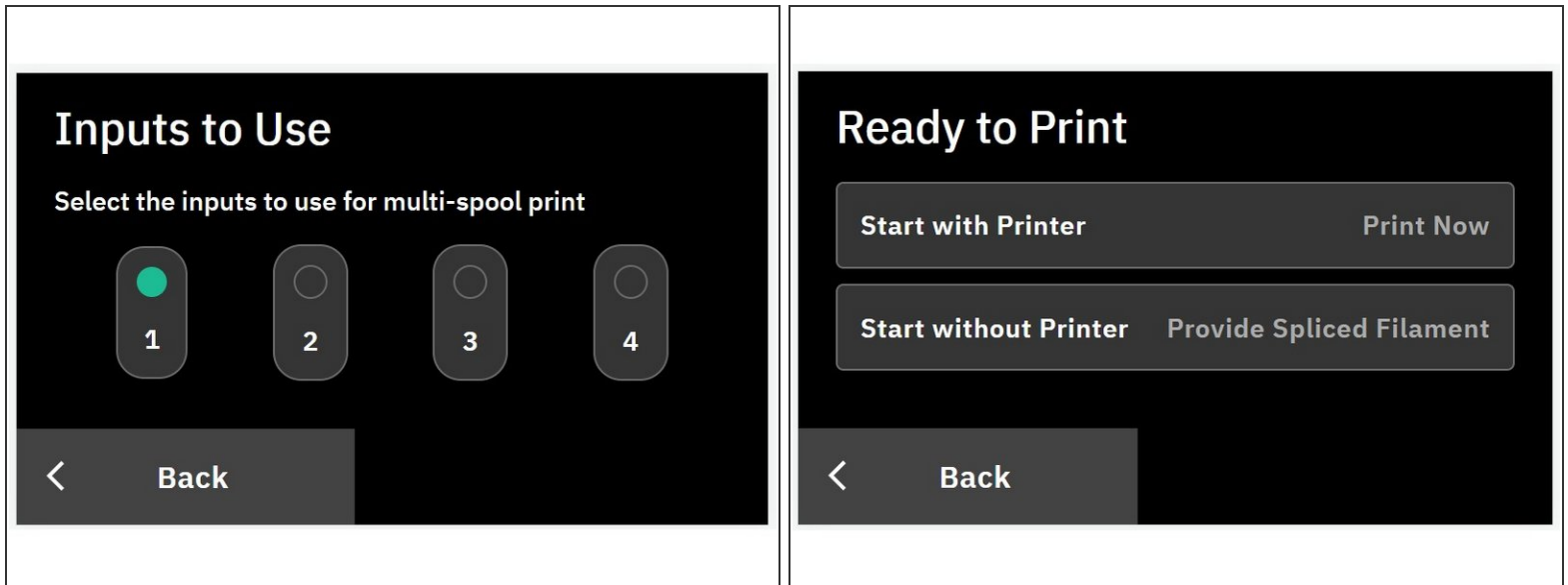
Using multi-spool mode allows Palette to automatically switch to a different input when a spool of filament runs out. This allows you to splice partial spools of filament together, or print continuously by having Palette change inputs once one input runs out.

## Step 1 — Custom Print Settings



- Once you have set up a printer profile, from the Home Screen tap *Start Print > Custom Print > Multi-Spool*

## Step 2 — Choose Inputs



- From the multi-spool mode screen, tap *Next* and choose which inputs you would like to use to splice the filament together.
- Choose to either *Start with Printer* or *Start without Printer*.
  - *Start with Printer*: This can be used to splice to the next drive automatically for long prints. Enough filament will be made to exit the selected outgoing tube. Preheat the printer, load the filament through the extruder under it begins to come out of the nozzle. Confirm on Palette's screen that the printer is loaded, and then start the G-Code.
  - *Start without Printer*: This method can be used to combine partial spools. Palette will splice from one drive to the next, starting with the first selected drive. Once that first drive runs out, it will proceed to splice to the next drive and so on.
- ❗ It is normal to see that after a spool runs out, that there is a leftover piece that is about 11-15cm that is too short to splice.
- 🚀 With [v21.12.21.0](#), the expected behavior is to start using filament from the first selected drive until it runs out. Once run-out is detected, it will automatically splice to the next, and continue sequentially. When the last selected drive runs out, the multi-spool operation ends.

If you have any questions about this feature, please contact us at [support@mosaicmfg.com](mailto:support@mosaicmfg.com).