



# Run-Out Detection and Changing Filament

What run-out detection is on Palette 3, how to enable it, and how to change a filament input if run-out occurs.

Written By: Mosaic Support

## Select Filament to Change

1/2



Back

Next

# INTRODUCTION

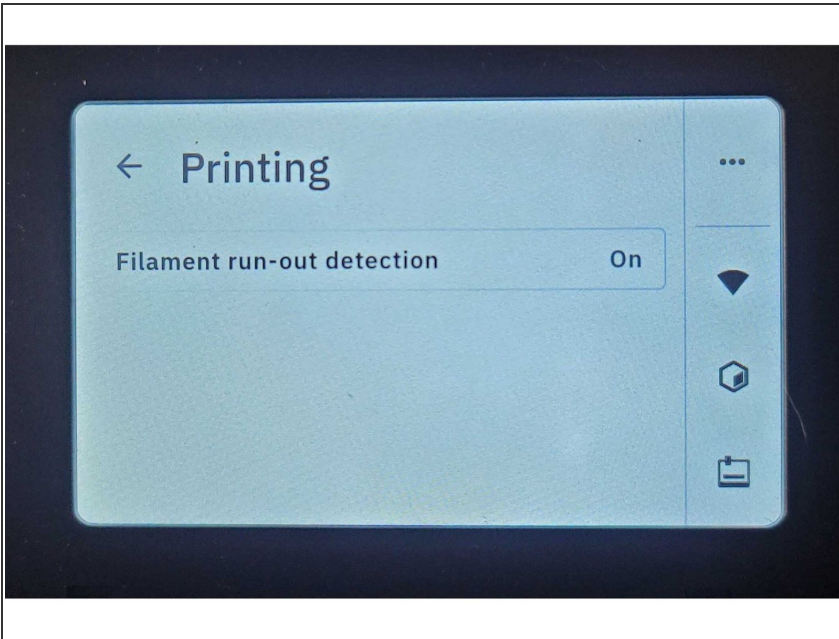
Run-out detection on Palette 3 will intercede in the event that filament reaches the end of a spool or falls out of its input.

This guide will teach you how to:

- Enable filament run-out detection on Palette 3
- Reload an input if run-out is detected
- Change filament during a print

Please also see this guide on [re-assigning inputs and how to set back-up drives.](#)

## Step 1 — Enable run-out detection



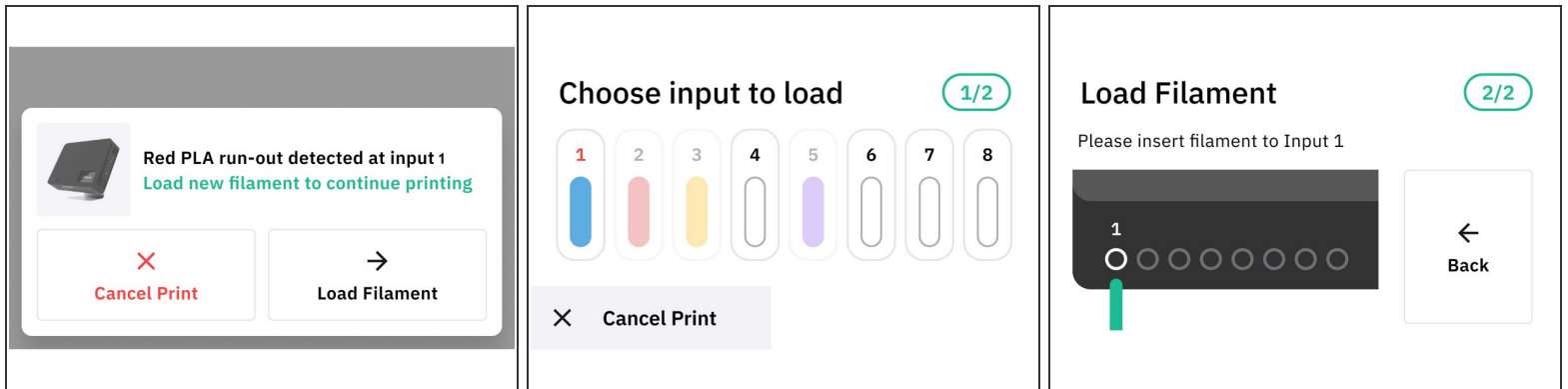
- Go to *Settings > Printing* to turn on filament run-out detection.

## Step 2 — Start a Print



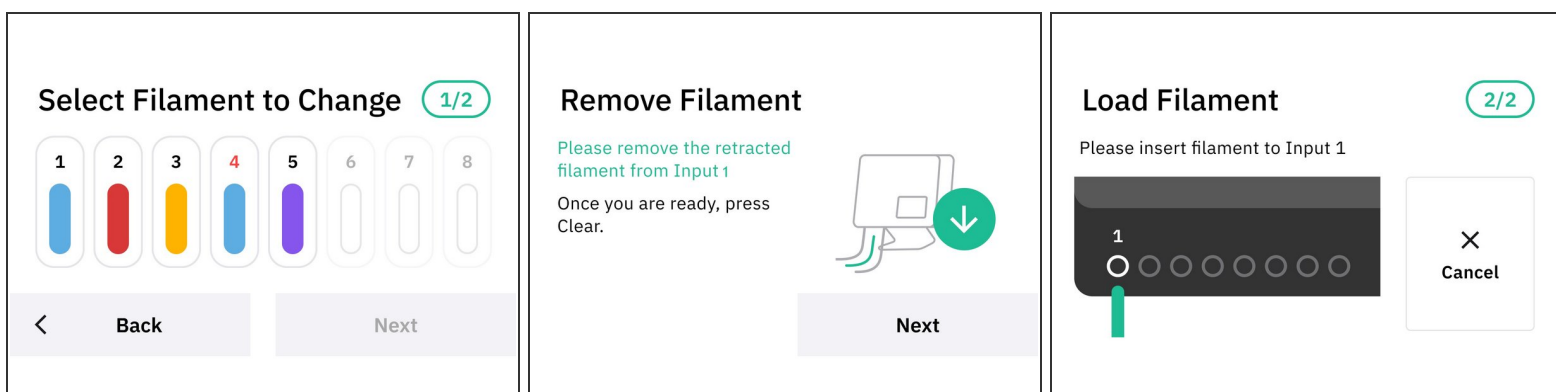
- Start a print in either [accessory](#) or [connected](#) mode.
  - ❗ Filament detection will be enabled during printing, after the initial loading sequence is completed.

## Step 3 — Filament Runs Out During Print



- If filament run-out is detected or the homing switch times out, Palette will pause.
  - ★ In connected mode, both Palette and the printer will pause. The nozzle on the printer will also cool.
- Palette's screen will display which input detected run out. The options are to **cancel the print** or **load filament** into the input.
  - Load filament: The input that ran out, or any back up drives assigned to that input can be reloaded.
  - Selecting an empty input will also set it as a back up drive for the primary input that ran out.

## Step 4 — Change Filament



- Changing filament can be done while a print is in progress, and will retract the selected input so that a new filament can be loaded. This can be done to change colors for the print, or preemptively load a new spool before filament runs out.
- ★ In connected mode, both Palette and the printer will pause. **In accessory mode, the printer has to be paused manually.**
- While a print is in progress, go to *Tools > Change Filament*
- Select the inputs you would like to change, and press *Next*.
  - ❗ Multiple inputs can be selected and changed, but they can't be reassigned to a new input, or have new back-ups selected.
- Palette will retract the selected inputs, please remove the filament completely and press *Next*.
- Palette will then prompt which inputs will be reloaded. Insert the new filament and then press *Done*.

If you have any additional questions, please send us a message at [support@mosaicmfg.com](mailto:support@mosaicmfg.com).