



Canvas Hub S Setup

This guide will take you through the steps of setting up your Canvas Hub S.

Written By: Mosaic Support



INTRODUCTION

Canvas Hub S streamlines your 3D printing process by providing wireless connectivity between your printer, Palette 2, and printer. Your G-Code and settings are now accessible across your devices.

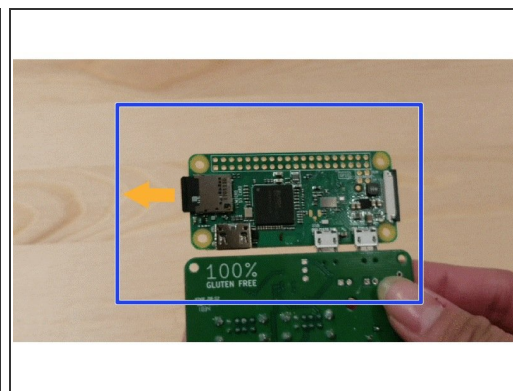
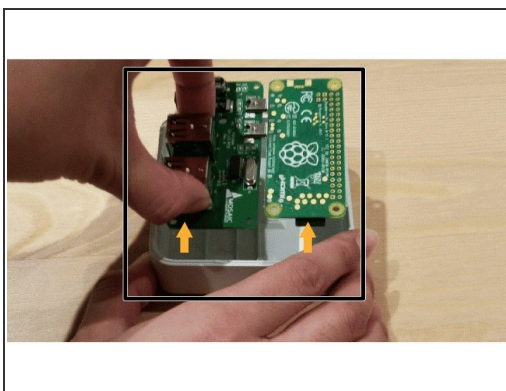
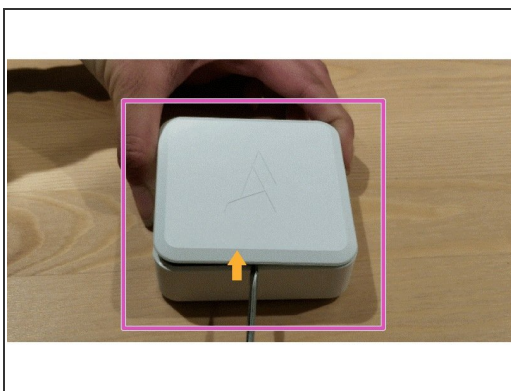
Step 1 — Download the Correct Image File



- [The image zip file for CANVAS Hub found here.](#)
- [If you are using CANVAS Hub S, the image zip file is found here.](#)
- Please download and extract the zip folder.

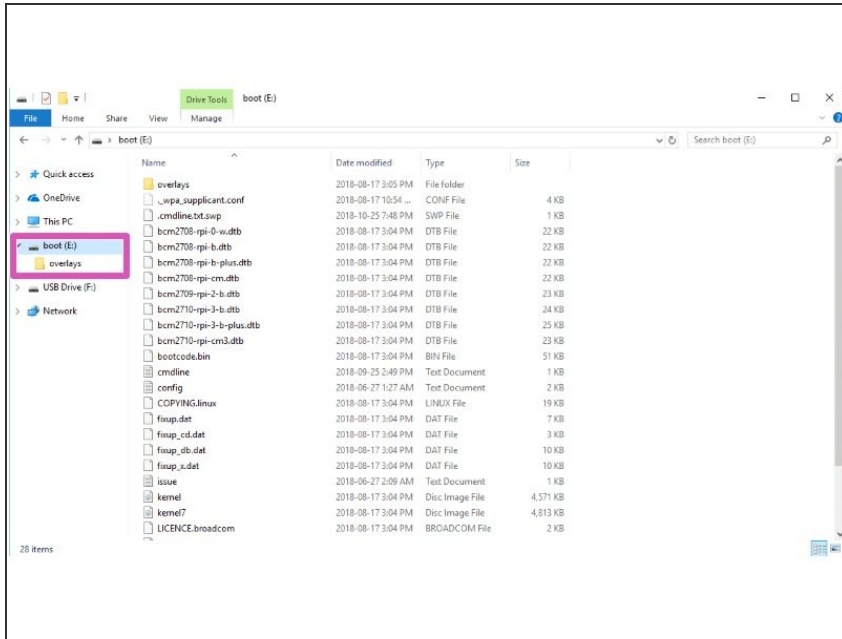
i *Update 11.29.2021:* The image files above have been updated for Python 3. When launching Octoprint for the first time, a new Octoprint user account will have to be created. Upon launching Octoprint for the first time you may also see a server error, please wait for about 5-7 minutes to allow it to start.

Step 2 — Retrieving the microSD Card



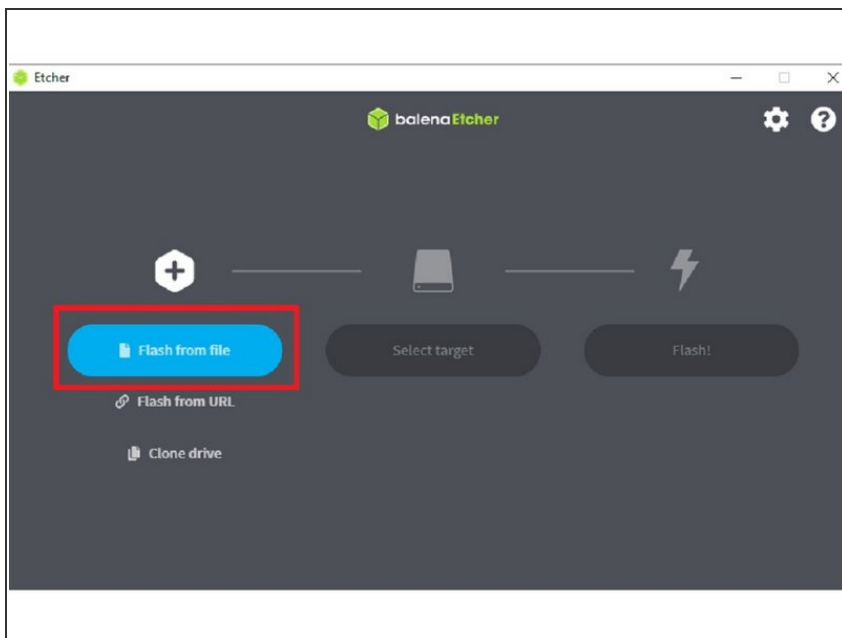
- Disconnect the power cable from your CANVAS Hub and open it up by inserting a flat head screwdriver under the lip of the lid and prying the top lid off.
- Gently lift the PCB out of the enclosure.
- Flip over the board and remove the SD Card.

Step 3 — Inserting the microSD Card and Getting Started with balenaEtcher



- Insert the microSD card into your computer. An adapter may be necessary.
- [Install the application 'balenaEtcher.'](#)
- Verify which drive your microSD is present on (in this example, our SD card is on the E: drive).

Step 4 — Flashing the microSD Card



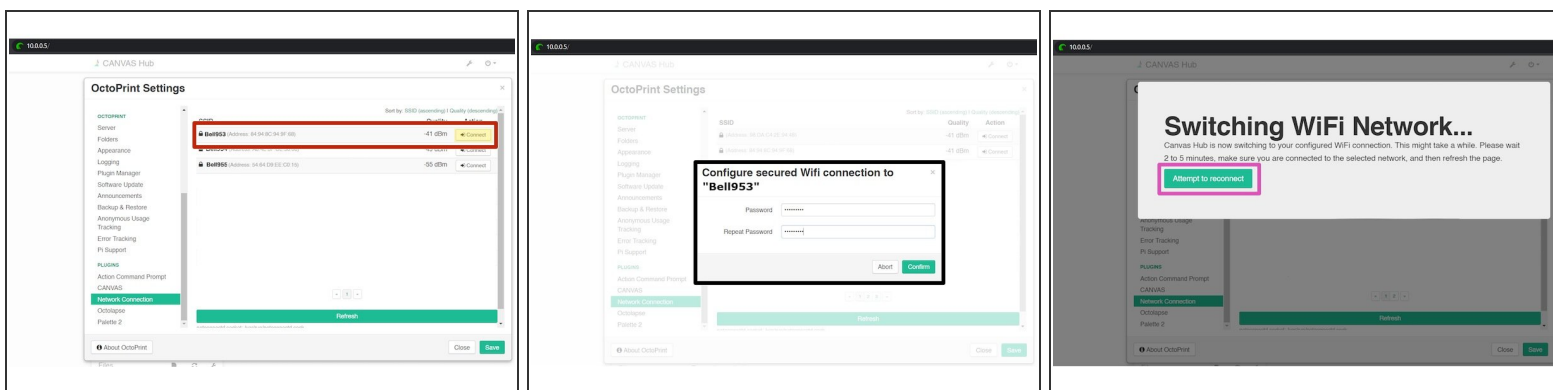
- Open balenaEtcher, and click 'Flash from file'. Load the image zip file.
- Once loaded, Etcher should automatically select the drive for your SD card.
- Select 'Flash!'. The process should take a few minutes to write onto your SD card.
- Reassemble your CANVAS Hub and follow the guide for setting up your CANVAS Hub. Please note that your new web address is 'ABCD-CH-canvas-hub.local/'.

Step 5 — Power on Canvas Hub S and connect to its hotspot



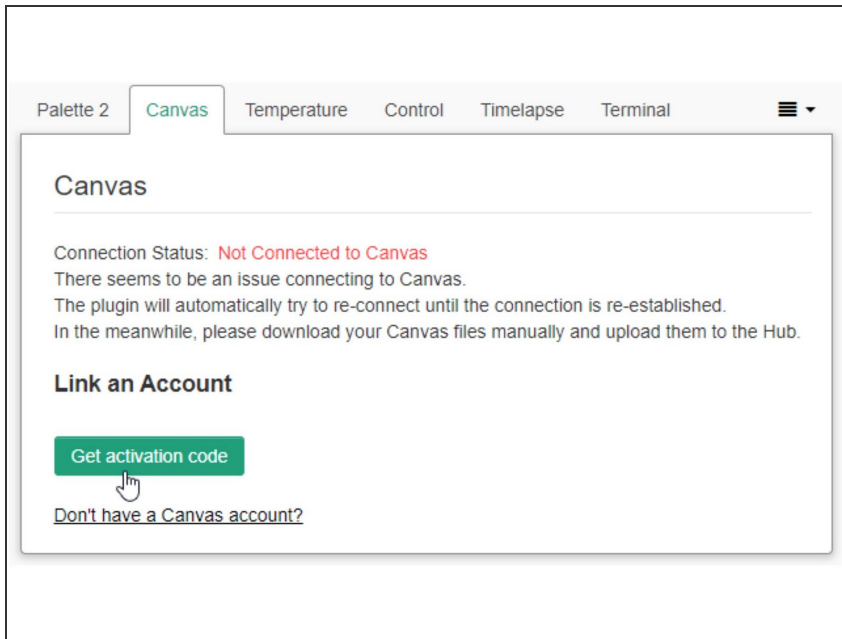
- Power on the Canvas Hub by plugging in its power supply.
- Allow the hub to boot up for a few minutes, the status LED will blink quickly.
- Once the hub is booted up, the status light will change to a slow blink. On your PC, open to view *available WiFi networks*.
- The Canvas Hub S should appear with the name 'abcd-ch-canvas-hub.' Connect to this network

Step 6 — Connecting Canvas Hub S to the Internet and Launching Octoprint



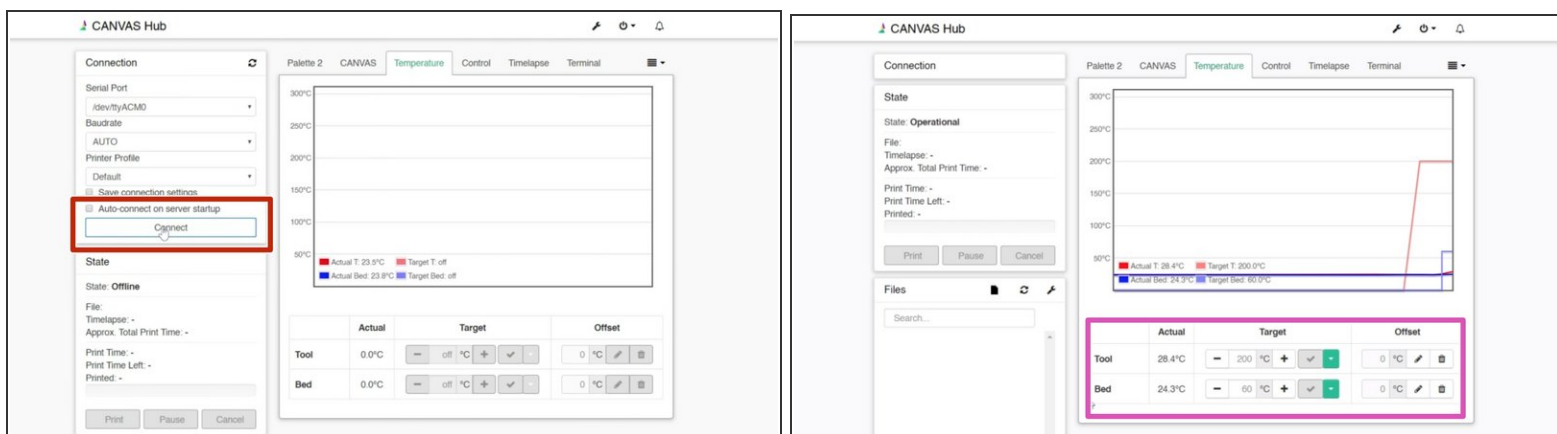
- Once the PC is connected to the hub's hotspot, enter 10.0.0.5/ into the web browser to connect to Octoprint.
- Proceed with the setup wizard, once complete go to *Settings (wrench icon) > Network Connection*.
- Search for the WiFi network you would like to connect the hub to, and click *Connect*. From there, enter the password for the WiFi network.
- ❗ Networks must be 2.4GHz
- After the password is entered, allow a few minutes for the hub to switch from using its own hotspot, to connecting to the selected network.
- ❗ If the connection is successful, the hub's hotspot will disappear from the list of available networks, and the hub's status LED will change to a solid white color.
- Connect back to Octoprint by either entering 'abcd-ch-canvas-hub.local/' in the web browser, or use an [IP scanner](#) to identify the Canvas Hub and enter the IP address into the browser.
- ❗ The IP Scan should display the hub's hostname as Shenzhen Ogemray Technology Co.,Ltd.

Step 7 — Link Canvas Account



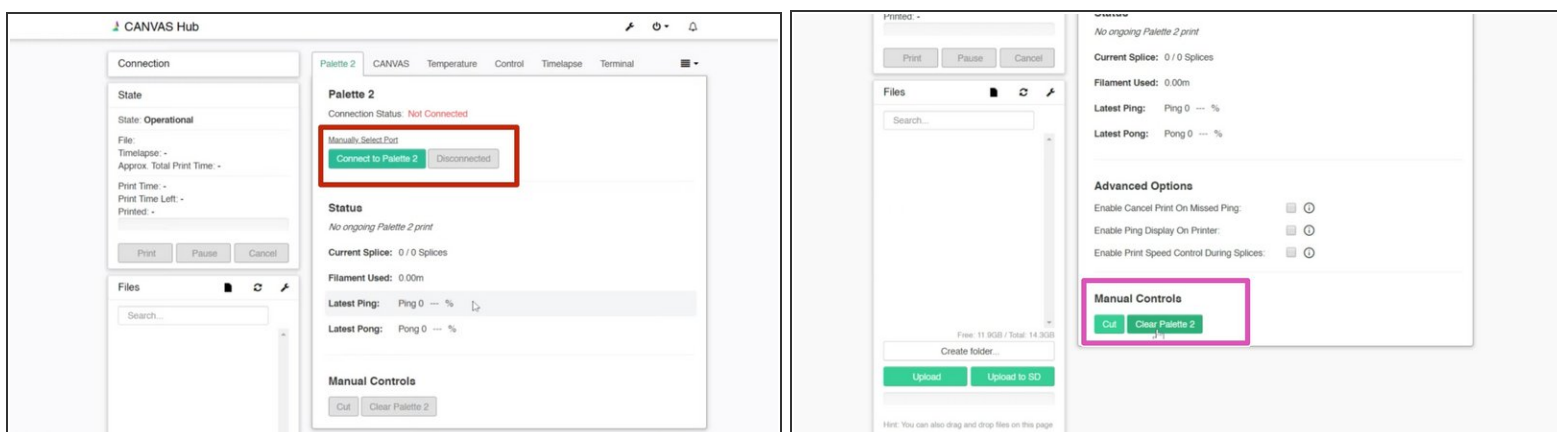
- To allow uploading of your sliced files directly from Canvas, you will need to first connect your account to Canvas Hub. In Octoprint, go to the **Canvas** tab and click "**Get activation code**".
- Visit canvas3d.io/connect to enter the activation code and link your Canvas account to Octoprint.
- If the link is successful, you will see your username in the **Linked Accounts** section, and **Connection Status** will change to Connected. This will allow you to send prints directly from Canvas after slicing to Canvas Hub.
- ① To remove a Canvas Hub from your account, login to Canvas and go to [Devices](#).

Step 8 — Connect to Printer



- There is a Connection window on the top-left of the web page for controlling the connection to your printer. If Canvas Hub is connected to your printer with a USB cable and powered on, proceed to press **Connect**.
- If the connection is successful, the status will change to Operational, and you will be able to control the printer from the **Temperature** and **Control** tabs.
- ❗ If you are unable to connect using AUTO for the ports section, please select a manual port available to connect to your printer.

Step 9 — Connect to Palette



- Navigate to the **Palette 2** tab. If Canvas Hub is connected to Palette with a USB cable and is powered on, proceed to press **Connect to Palette 2**.
- If the connection is successful, the status will change to Connected. You will be able to operate some Palette controls from here, and you can test the connection by pressing the **Cut** or **Clear Palette 2** buttons to see Palette respond.
- ❗ If you are unable to connect using AUTO for the ports section, please select a manual port available to connect to Palette.

Step 10 — Starting a Print



- Your Canvas Hub is now ready to go! Visit canvas3d.io to slice your first project to calibrate Palette with your printer. Please also continue with [Palette 2 connected printing instructions](#).

If you have any additional questions, please send us a message at support@mosaicmfg.com.

This document was generated on 2022-05-09 06:05:28 AM (MST).

